



CHURCH PROFILE

GUILDFORD BAPTIST CHURCH

WHO ARE WE?

We are a large town centre church with around 470 members and many active non-members as well. Based at the newly-refurbished Millmead Centre, our congregation is very diverse (multi-ethnic as well as intergenerational), organised into mid-sized pastorates, and involved in various other ministries including evangelism, prayer ministry and community outreach.

The church has a thriving Children's and Youth ministry, a high level of community involvement, particularly since the opening of our café, and many world partners serving in some of the most troubled parts of the world.

We are an evangelical church – rooted in the Word and sacrament – and a charismatic church, open to ever new experiences of the Holy Spirit. Hospitality is very much at the heart of our understanding of mission.



GUILDFORD BAPTIST CHURCH
@MILLMEADGBC
GUILDFORBAPTIST



GUILDFORD BAPTIST CHURCH CHURCH PROFILE

OUR VISION

As a Church, we do not have a “strapline”, but recently as part of defining who we want to be, we wholeheartedly agreed on the following statement:

“We are a vibrant church located by the River Wey in the heart of Guildford. We are hungry to see lives changed in the name of Jesus and for God’s Spirit to flow through us. Our community is intergenerational and international. All are welcome.”



THE TEAM

We have a team of 19 paid staff, and we have many volunteers who are as key as any paid team members.

The Pastoral team is made up of the Senior Pastor, Assistant Pastor, Children & Families Pastor and Youth Pastor, supported by a Youth Worker and a Children & Families Worker.

On the Operations side, our Operations Manager and team makes sure that the ministries can thrive and the building is available for both internal and external users. The Operations team also includes maintenance, finance, HR, communications, administration, caretaking and cleaning.

We have 6 Elders (including the Senior and Assistant Pastors) and 7 Deacons: Prayer (x2), Finance, Catering, Missions, Community Outreach and Property.

We believe that as the body of Christ every regular attendee and Member should be actively engaged in the task to which God has called them, whether in the church, the community and/or the workplace. As a church, we seek to support everyone in their ministries through worship, fellowship, teaching and prayer.

OUR BUILDING

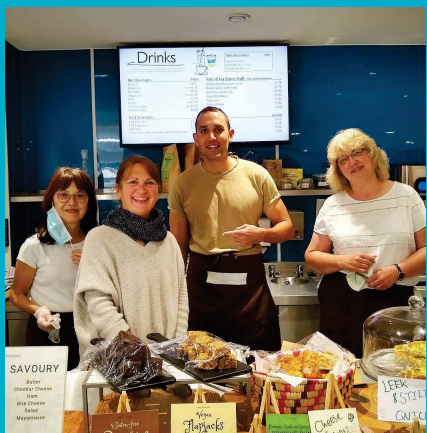
We are blessed to have a Church building situated in the heart of Guildford by the River Wey.

We have recently finished the final phase of a 10-year building project which has transformed the original 50-year-old building into a modern, vibrant place open to all. Central in the building is a large auditorium where services and special events are held.

The new building includes our café ministry, *Open Grounds*, with the vision to become a community space that cultivates friendship, celebrates diversity, and delivers high-quality service to all visitors. We also have a small new chapel which is a place of reflection and prayer, and 9 high-quality rooms of different sizes and shapes that are available for both the church and third parties to use.

The new building encompasses many features close to the heart of the Church – encouraging accessibility, hospitality and environmental stewardship. These include an accessible toilet complete with hoist and shower, a rainwater recovery system and open spaces to encourage interaction and sharing.

The building project has come to completion at a significant time. We have been able to use the new space throughout the pandemic for worship, prayer and community support, serving as a beacon of hope during the pandemic.



MINISTRY & OUTREACH



At Millmead, we love creativity. We have regular art exhibitions and one of our ministries is the

Riverside Artspace. During the pandemic we began "Speak to your Soul" - a creative way of showing how God was speaking to us. This Autumn, we held an exhibition named "Re-emerging and re-connecting". We think it's a good phrase to describe the process which we are going through at the moment, as regards to both our own church and also the wider community.

In addition to many of our existing missional church and outreach groups, we have introduced new community outreach activities, including running several Alpha courses focused on "recovery", CAP (Christians Against Poverty) Job Club, and running a barista training programme.

OUR YOUTH MINISTRY

Our Children and Youth work are organised in two groups – children from birth up to school year 6, and young people from year 7 to 13. The boundary between the two is a soft one, and much effort is made to ensure that the children are supported in the transition during what can be a challenging time in their development.

At Millmead, we have around 50 young people who regularly attend our weekly activities, as well as one-off events. Our vision for the Youth Ministry is "Belong, Believe, Inspire". We want to see young people attracted to the church, receive a warm welcome, and become part of a close-knit family of believers. We want them to develop intimate relationships with God, secure in their identity as His children with strong foundations, and being passionate about sharing Jesus with others.



Our Youth work is based in The Hub - a space the Youth Team have made to feel like a homely living room. We have recently added comfy sofas, rugs, and the artwork hung in the room was created by the young people themselves.



The Hub provides a safe space for individuals to explore their identity, develop their spirituality and discuss topics that are relevant for teenagers today. Our mid-week groups and Sunday evening drop-in (Open House), are hosted in homes of leaders or church members, allowing the young people to establish relationships with the wider church family and experience generous hospitality.

Outside Millmead, the Youth Team connect with many other young people, in schools and at collaborative events with other churches and organisations across Guildford, such as Christmas and Summer parties and we are hoping to run a Guildford-wide Youth Alpha in the New Year.

We always aspire to be innovative in the work we deliver. During the pandemic, we posted daily devotionals on Instagram, sustained our Life Groups on Zoom whilst we couldn't meet in-person, maintained Sunday morning sessions, and filmed midweek livestreams. We even ran 2 virtual youth weekends!

As restrictions eased, we took the opportunity to meet in person as soon as possible, including running monthly social events such as playing *Among Us* around the church building. We also recreated Channel 4's *Hunted* around Guildford with volunteers as the 'Hunters', ran a family beach trip, and even managed to go on our Youth Weekend Away to Carroty Wood!

As more young people are returning to church, we look forward to welcoming our new Youth Pastor to help us navigate our way through the next season!

