

ST. GEORGE'S
STAMFORD

'MAKING DISCIPLES
ON MISSION WITH JESUS'

**St George's Church,
Stamford**

**Parish Profile for
New Wine Discipleship Year
Students 2019**



Index	Page No
Resource Church	3
Church Revitalisation	3
Workers for the harvest field	4
St George's Church	5
Our vision and values	5
The Parish	5
Stamford Deanery	5
Bishops Mission Order	6
Discipleship Pathway	6
New Wine	6
Finances	6
Current St George's Staff Team	7
Organisational Chart	8
Job Description	9



Resource Church

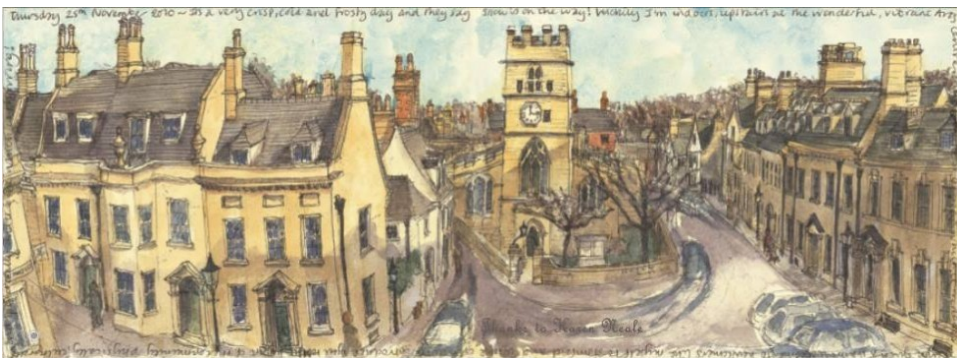
The Bishop of Lincoln has recently designated St George's Stamford as an official resource church, alongside St Swithin's Lincoln and Lincoln Cathedral. The purpose of this new initiative funded by money from the Strategic Development Fund is to revitalise the life of the church in the larger urban centres of Lincolnshire where under 1% of the local population attend an Anglican church.

St George's has been acting as an informal resource church over many years and has a record of pioneering new initiatives in the Stamford area. We have a usual Sunday attendance of around 500 people and our mission is 'making disciples on mission with Jesus.' We run regular Alpha courses and have good connections with New Wine. www.stgeorgeschurch.net.

In recent years, we have completed two building projects which have given us greater capacity to serve the town and reach more people for Christ. We currently have 15 people (full and part time) on our staff team.

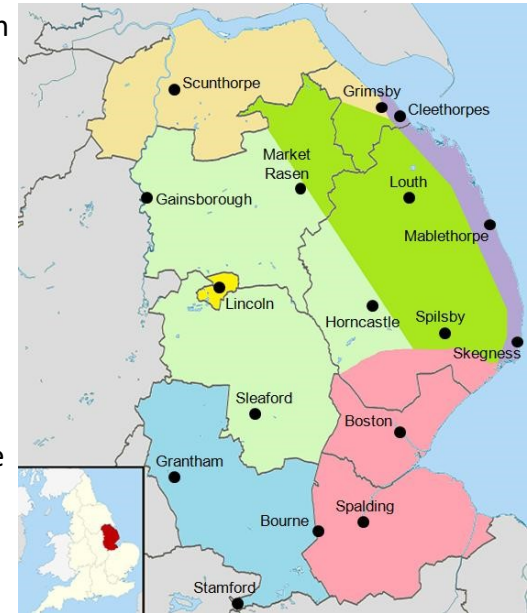
Stamford (a town of 20,000) has won the accolade of 'the best place to live in England.' It is home to Burghley House, on the A1 and 13 miles from Peterborough where there is a direct line to London. There is an excellent choice of primary and secondary schools in the area.

We belong to the Deanery of Stamford and have good relations with all the churches in town.



Church Revitalisation

St George's is in the south of Lincoln Diocese and is in a good position to resource the larger urban centres (market towns) to the north and east of Stamford. The plan is to recruit and train church planting teams with ordained leadership who will move to the larger market towns to pioneer new church growth or revitalise 'plant' churches. (The Bishop of Grimsby will prepare the ground, leading the process of consultation with local stakeholders, both clergy and laypeople in the deaneries, as they discern the right locations in which to work.)



St George's will act as a training hub for church planting curates, team members and interns. We are recruiting two church planting curates who are committed to planting new congregations into the larger market towns of south Lincolnshire. The church planting teams will move to the new centre when the ground has been prepared. The aim is to grow new congregations into self-sustaining communities of 150 people which are open to planting again if the opportunity arises.

Our church planting teams will include the church-planting curate, children's and youth workers developed from our intern programme and a part time CAP debt centre manager. We will also encourage church members of St George's, whom God calls to share the vision, to move with the team to form the basis of the new church plant.

To enable all of the above to happen St George's is recruiting new workers to help make the resource church vision a reality.

Workers for the harvest field.

Martyn Taylor, who has been at St George's for all of his ministry and Rector for 16 years, will oversee the training and preparation for the church plants from the St George's end, working closely with the SDF board in Lincoln and under the oversight of the Bishop of Grimsby, who is the overall project lead.



Associate Rector

In order to release Martyn into this new responsibility, we will appoint an Associate Rector who will act as a number two at St George's and take responsibility for looking after and helping to grow the parish, under the oversight of the Rector.

Church Planting Curates

We will appoint two church planting curates who will train as curates at St George's, but also be outward facing towards the new church plants in terms of the mission aspects of their training. They will spend time preparing the ground in the chosen market towns to the north and east.

New Children's and Family Minister, plus Youth Minister

We are restructuring our youth and children's ministry to appoint both a new Children's and Family minister and a new Youth Minister. The Children's and Family position will also be on the Diocesan Mission team supporting work across the diocese through the sharing of their expertise with the wider church. The Youth Minister will have a brief for overseeing our current church based ministry as well as breaking new ground in Stamford with un-churched young people and the making of new disciples.

Both positions will help equip our interns for youth and children's ministry in St George's as well as the potential church planting situations in other urban centres.

Discipleship Year Students

We will recruit up to four young people for our discipleship year in partnership with New Wine. For the right individuals, there will be potential for a second year and to become part of a church planting team where there is evidence of a clear calling and gifting.



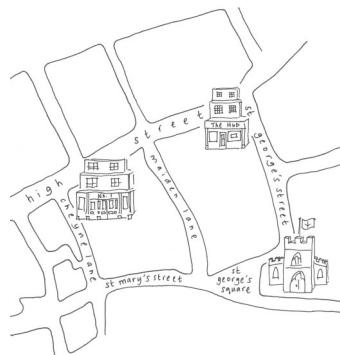
'Come over and help us'

These are exciting times for St George's and we recognise the huge challenges that lay ahead. We are aware that 'unless the Lord builds the house, the builders labour in vain' (Ps127:1). Our great desire is to follow the Lord's leading and to see where he is already working that we might join in.

Is the Lord calling you to come and join in the new work that he is preparing in South Lincolnshire? We would love to hear from you if you sense He might be calling you to join with us in this great work.

St George's Church

St George's meets on Sundays at 8am (fortnightly), 9:15am, 11am and 6:30pm. The 8am is a traditional communion for the weeks when there is no communion in the other services. The 9:15 and 11:00 have the same format (all age on the first Sunday). Younger families mostly choose the 9:15, whilst the 11:00 has an older profile with a smaller children's ministry. The 6:30pm is the most relaxed, with more time for extended worship. Our teenagers come to that service and meet afterwards.



Our Church building is small, it holds 240 people and feels full at 150. We are opening a new church hall this April, which gives us more space for developing our youth and children's ministry alongside the Sunday services as well as other new ministries in the week.

Our daily work happens at the St George's Hub, which is just off the high street. The Hub is home to our 15 full and part time staff and we have a large footfall of local people coming in looking for support from our various social action ministries (CAP and Fresh Hope).

Our Vision and Values

Our Purpose: 'Making disciples on mission with Jesus.'

Our Values: *Recognising that Jesus is at the centre, the Bible is our Guide and that people matter, we seek to be a loving community who:-*

- Pursue God's presence together.
- Grow in discipleship.
- Care for everyone.
- Engage with our world in love.
- Enjoy celebrating God's love together.

Our Vision: *'Our vision is for greater maturity, deeper engagement and numerical growth.'*

By 2019 we will have **greater maturity** as every member is valued, nurtured and equipped to be a devoted dependent disciple of Jesus in the power of the Holy Spirit.

We will have **deeper engagement** with our world through personal witness, social action, local evangelism, missional communities, diocesan partnerships and our world mission partners.

We will have **numerical growth** as a loving community of multiple congregations, missional communities and small groups.

The Parish

St George's has a very small historical parish of about 1500 people. We have an average of 10 weddings, 15 funerals and occasional baptism requests from the parish which we encourage into our all age service.

St George's primary school is Voluntary Aided and is in a federation with William Hildyard School in Market Deeping, which is also VA. We share an executive head. The rector has been on the governing body for 22 years and the new associate rector will take over this responsibility.

Our staff team take it in turn to lead Collective Worship on a Wednesday morning and to visit the neighbouring nursery (The Ark). Our Children's team assist with an after school club.

Stamford Deanery

The Stamford Deanery is very small and when fully staffed includes five incumbents. Two parishes are currently in vacancy and we hope to appoint for September for both of them. The Rector of St George's is currently the Rural Dean until February 2020.

Our Deanery represents the breadth of the Church of England; there is something for every flavour of Anglicanism, which gives freedom for each parish to be themselves. We include the Uffington group, a benefice of seven village parishes on the edge of Stamford.

Bishop's Mission Order

In September 2017 the Revd. Canon Steve Simcox joined the St George's Staff team with a brief to encourage mid-week discipleship and new missional communities in partnership with local churches across three deaneries in South Lincolnshire. Steve is based in Bourne and links into our staff team, but is largely working outside Stamford.

Discipleship Pathways

In recent years St George's has grown in depth as we have engaged with many of the social issues that we have become aware of in the community. We have established a ministry called Fresh Hope, which works closely with Foodbank and Christians Against Poverty. We have a ministry to the homeless and the hungry in partnership with others. Many of our contacts come to Friday Connect, a free café in the church where they are befriended, listened to, given advice, invited on life skills courses etc.

We have established discipleship groups (Band of Brothers and Explore) for those who have come to faith. A good number now join us in church on a Sunday.

We have run the Alpha course consistently for over 20 years. This was the main growth engine around the turn of the millennium, where we ran a number of large courses that were very fruitful. We continue to run Alpha in the autumn and spring term.

Our biggest discipleship pathway is the Children's and Youth work, with around 100 participants in Children's Church and Youth Groups each Sunday plus midweek mums and tots, messy church, cell groups, and youth club activity. Another major pillar in creating and

nurturing disciples for Jesus is our network of 40 midweek small groups. Both these are also strong attractions for Christian households moving to the area.

New Wine

As a church family, many of our members are resourced by the New Wine Summer conferences. Each year we have created our own village at Shepton Mallet. With the conference moving to Peterborough this summer, we will hope to encourage even more to attend. Our Staff team engage with the variety of leadership conferences that New Wine put on and we are a part of the Midlands area. Liz Fell our churchwarden is a New Wine Trustee. We also have a good number who visit the Keswick Convention each summer as well.



Finances

Our annual budget is around £400,000 and last year we had a gift day towards our latest building project, which raised £335,000. We ended the year with a deficit of £15,000 on the general fund, which we expected given the building project. We expect this to work its way out over the coming year.

Current St George's Staff Team



Martyn Taylor, Rector

Vacancy

Associate Rector



Lorraine Wright, Associate Minister



Debs Jones, Pastoral Worker



Rebecca Winfrey, Pastoral Worker



Richard Knowles, Assistant Pastor

Vacancy

Youth Minister

Vacancy

Children's & Family Minister



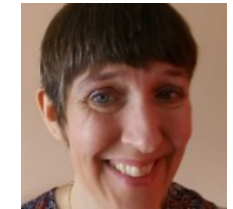
Simon Jary, CAP Debt Centre Manager



Louise Rose, Community Projects Manager



Gilly Franklin, CAP Support Co-ordinator



Clare Arthey, Operations Manager



Becky Goff, Administrator/ Receptionist



Claire Beaton, Administrator/ Receptionist



Joseph Caseley, Ministry Assistant



Liz Fell, Churchwarden

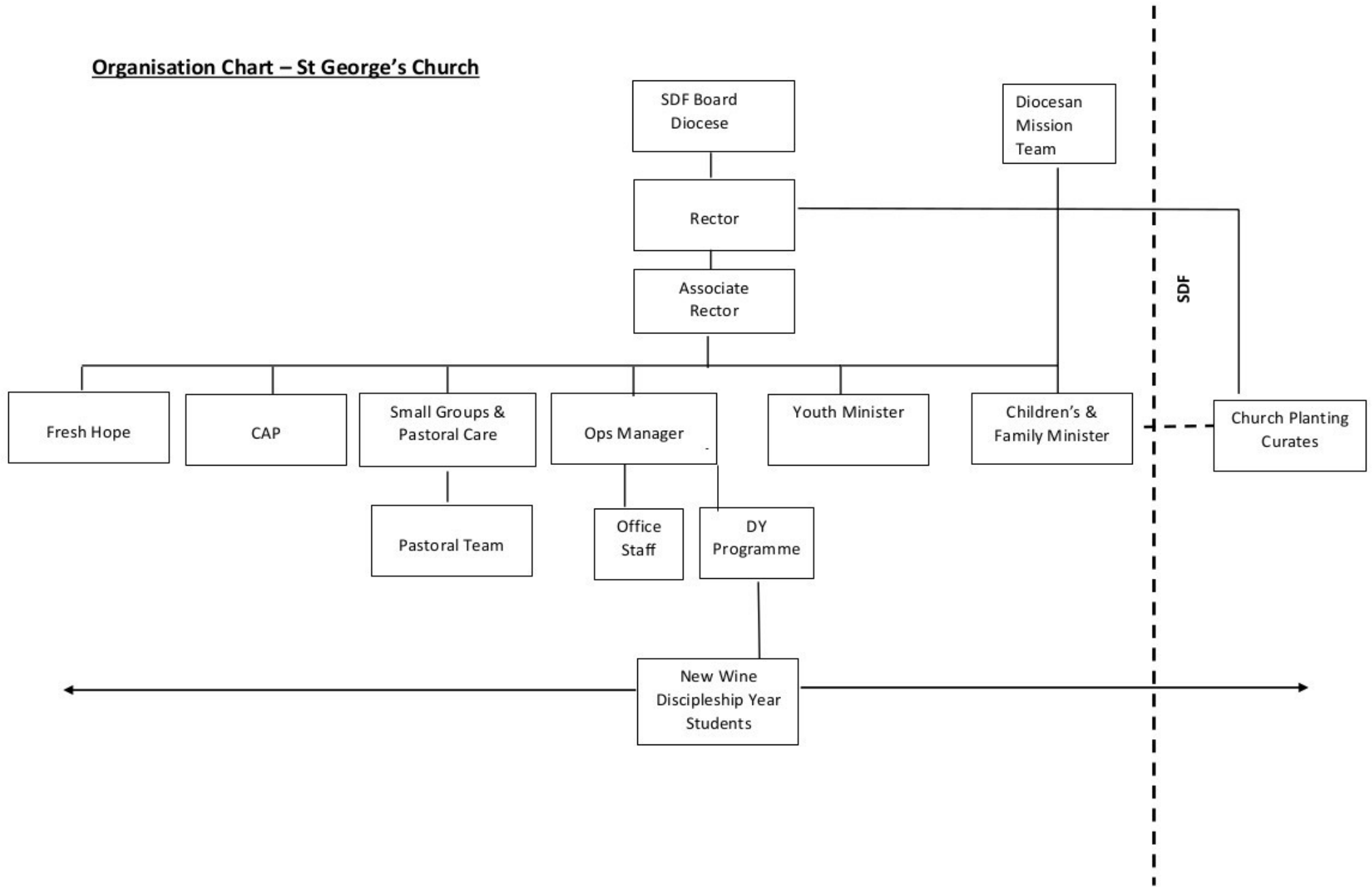


Jaish Mahan, Churchwarden

Vacancies

New Wine Discipleship Year Students

Organisation Chart – St George’s Church



St George's Stamford New Wine Discipleship Year 2019 - Job Description

This is an exciting time for St George's Stamford as we have been just been designated as a Resource Church by our Bishop. Over the next five years, we will send out two church planting teams to larger towns in South Lincolnshire under the leadership of church planting curates.

To enable this to happen, St George's is recruiting a new Associate Rector, Children & Families Minister, Youth Minister, two church planting curates and four Discipleship Year students.

New Wine Discipleship year

In order to support the work in Stamford and in preparing the ground for new work in other places we will become a New Wine Hub for the Discipleship Year (DY) programme. **We will invite four young people** who are seeking God's will for their lives, who are open to spiritual growth, who want to develop their gifts and are willing to serve in practical ways to join the adventure in Stamford. We will offer **a one-year experience in conjunction with the New Wine discipleship year** where the team of students will have clear line management from our experienced Operations Manager and gain an immersive experience across the whole church, so that they gain an insider view of how a larger church operates.

We will offer ministry experience and opportunities in our youth and children's team, worship team, office and reception team, media and communications, schools work, Fresh Hope (social action teams) and potential early church planting work.

The teaching curriculum will cover a number of core subjects including growing a deep life with God, our identity in Christ, the Kingdom of God & the ministry of Jesus, understanding and applying the Bible today, evangelism, leadership, character development and calling amongst others! You will learn from some inspirational and experienced leaders from different spheres of life, including church and the marketplace. Students will also be supported to attend 2 national DY conferences during the year to benefit from being part of something bigger.

The DY starts the week beginning September 9th 2019 and will end on July 18th, though interns will be expected to serve on the New Wine United weeks in the summer.

St Georges welcomes other churches providing student placements to attend the Hub for these teaching sessions.

Competencies Character and Personal Qualities.

- Are you prayerful and full of faith, expecting great things of God and living and learning to lead for a church where God is moving powerfully in people's lives?
- Humble – having a desire to learn from others and grow personally. Able to submit to those in authority.
- Collaborative and a team player. Able to sustain healthy relationships, handle conflict constructively and have fun.
- Self-aware and hungry to grow as a disciple of Jesus.
- Committed to the discipleship process and the training and development on offer.

Allowance

A weekly allowance of £228 to cover housing, bills, food and other costs will be provided. We will also cover the cost of the course fees and the two residential weekends.

Full time

The role is full time including 1 day during term time attending the discipleship training. Flexibility to work weekends and evenings will be required.

Holidays: four weeks plus bank holidays including the week between Christmas and New Year.