



CHASE
family church



Information Pack

September 2019 – July 2020

Hi,

Thanks for downloading the Encounter Information Pack.

We started the Encounter journey in September 2018 – it's been an exciting year full of development and discovery, and we are looking forward to a new team experiencing it!

I wonder if you are reading this because you are at a point in your life where you are looking ahead to the future and thinking 'what is God calling me to do?'. Encounter provides you with the opportunity to take a year out to serve God and seek His call for your life. This is a year to experience different areas of Christian ministry and mission – giving you a chance to try them out and discern where God may be leading.

We do this by placing you in a church in North London – each with a unique setting for you to develop and grow as a disciple of Jesus. Each week starts with the team coming together for prayer, worship and training before setting out to serve in the church you are placed in.

Our heart for Encounter is to see people step out of their comfort zone for Jesus – to encounter Him in a deeper way and experience the transforming power of the Holy Spirit.

I hope you will consider applying for the 2019-2020 Encounter team. This information pack contains the details of the programme - if you have any more questions about the year please do not hesitate to contact me.



Suz Tidey

Encounter Co-ordinator

suz@chasefamilychurch.com / 020 8366 5488

What is 'Encounter'?

It's an opportunity for anyone aged 18+ to spend a year serving Jesus in North London.

How does it work?

Encounter is run by Chase Family Church - you will spend a year either being placed with us or placed with one of our partner churches. You will become fully involved in the ministry of your placement church for the year in a variety of different areas.


Every Monday all the Encounter students will gather at Chase Family Church Centre for a time of prayer and worship in the morning, and the weekly training session in the afternoon.



THEOLOGY



MINISTRY



WORSHIP



SERVING



MISSION



MEDIA





THEOLOGY

Spiritual Gifts
Evangelism
Leadership
Worship
Community
Mission

The Persecuted Church
Grace
Other Religions
Healing
Discipleship
The Trinity
Apologetics

**SOME OF THE
SUBJECTS WE
COVER**

How to work with:
youth/children /families/additional needs



Brendan Munroe



Dave Bilbrough



Chris Ragg



Josh Wisker



Rachel Jeremiah

Jesus-centred Bible Teaching

A photograph of a room with many warm, glowing Edison-style light bulbs hanging from the ceiling against a dark blue background. The bulbs are arranged in a grid-like pattern, creating a warm and inviting atmosphere. The background is a deep, dark blue, possibly a wall or a large window looking out at night. The overall mood is cozy and intimate.

MINISTRY

Moving in the power of the Holy Spirit



christians
against
poverty

CAP



You will help to run and lead various areas of ministry in your placement church. (E.g: youth and children's work, Alpha, preaching, leading worship, outreach events etc).



FREEDOM
IN CHRIST



Alpha



WORSHIP



Learning intimacy and warfare



Every week we will spend time in prayer and worship – listening and responding to God and experiencing His gifts through the Spirit.

You will be encouraged to regularly lead others in prayer and worship.





SERVING



1 in 5 of the UK population live below the poverty line. Last year over 5800 emergency food parcels were given to people in need in the Enfield area.

You will have the opportunity to be part of the Foodbank team providing much needed help and resources.



Reaching the poor

MISSION



Helping with local and overseas projects



You will have the chance to go on an overseas mission trip to experience serving Jesus in a different country. *(Pictures from trip to Lebanon 2018)*



You will be part of the team for our week of community mission in the summer. The N:Serve mission week involving activities such as litter-picking, garden clearing, community cafés, car washing and evangelising.



OVERSEAS

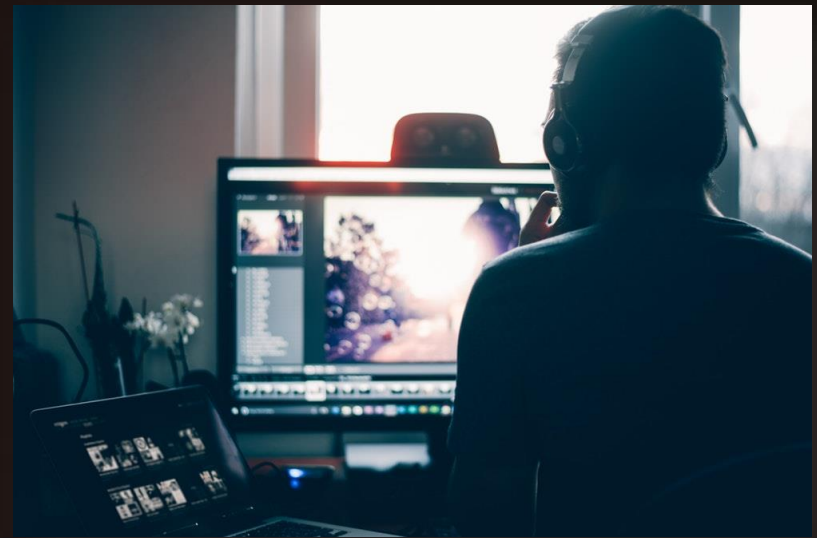
LOCAL



MEDIA

Develop your media skills during the year

You will receive training in the use of social media for the promotion of church activities as well as gain valuable experience in camera work and the use of editing software.



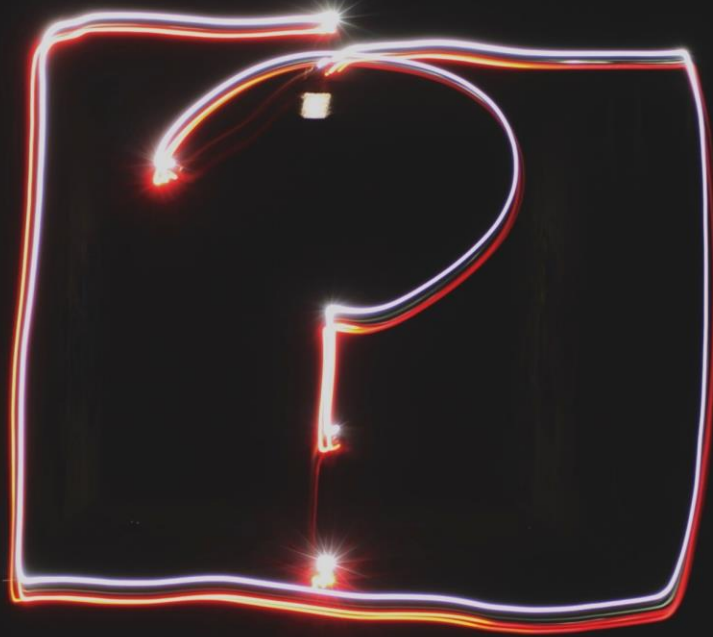
Engaging with a fast-paced world

“ It’s been a privilege doing Encounter. I’ve really developed through the training, opportunities and experiences. The amount of trust and active faith I have in God has been increasing; he has been using me so much, which is an honour beyond words.

God has used me prophetically to minister to others and heal people through my hands! I’ve been trained in being a leader and a servant. I’m so excited to see what will happen next.



Rose
Encounter Student (2018 – 2019)



FAQ



What are the dates for Encounter?

Encounter will start mid-September 2019 and finish with the N:Serve mission week at the end of July/beginning of August 2020.
(Exact dates will be confirmed nearer the time).

*If you have any more questions, contact Suz Tidey:
suz@chasefamilychurch.com
020 8366 5488*



Where will I live?

If you do not live locally, your placement church will arrange for you to live with a church family for the year.



Will I have time off?

Yes, you will be given regular time off during each week. You will also have holiday time throughout the year, including two weeks around Christmas.



What support will I receive?

You will be assigned a spiritual mentor for the year – someone in your placement church who will meet with you regularly to listen, encourage and pray. You will also have regular supervision time with the Encounter Co-ordinator.



How much will it cost?

Each person taking part in Encounter will need to raise £2000 for the year – this covers the costs for training, travel and some living expenses. Your placement church will also contribute towards travel and living expenses. You will be required to raise money for the overseas mission trip later in the year, but we will help you plan and carry out fundraising for this.



How do I apply?

The application form for Encounter is available on our website, please email your completed form to Suz Tidey (suz@chasefamilychurch.com) or post it (Chase Family Church, Shirley Hall, Shirley Road, Enfield, EN2 6SB). Once we receive your form, we will review it and take up references. If your application is successful, we will invite you to an interview.



encountercfc



encounteryearout



CHASE
family church