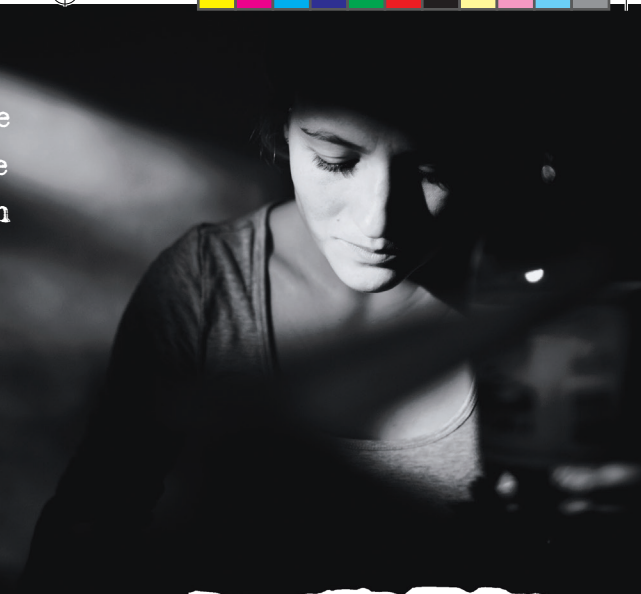


"The extent of violence  
against women cannot be  
underestimated, nor can  
its consequences. The  
impact ripples through  
every area of society"

Elaine Storkey




PRESS RED

Turn the silence off





#turnthesilenceoff  
pressred.org

Patron: Mrs Margaret Sentamu | Registered Charity No. 1180339



Women and girls all over the world suffer daily the torments of rape, prostitution, trafficking, early marriage, domestic abuse and female genital mutilation. The Church is also often complicit, with women and their worth still not being sufficiently championed or promoted by numerous church traditions in the UK and across the globe.



Founded in 2016, Press Red makes people aware of these injustices, which are happening worldwide and on our own doorstep. We point them towards the organisations working in these areas, and we encourage and support them to be active and stand for change.

As a Christian charity, we believe that Jesus' death and resurrection offer healing, peace, and equality for all those dealing with these issues.

It's a huge problem, but when all of us work together we will make a huge difference.

## COMMITTED

We focus on reaching the goal, and not on who gets the credit for the work.



## OUR MISSION

To be a significant force in the fight to eradicate abuse and violence against women in all its forms through increasing awareness, whilst challenging and changing attitudes and behaviours.

## OUR VISION

A world in which no individual, society, or culture accepts abuse and violence against women, and where they can live full and meaningful lives in safety and security.

"This is a time... not to put our heads in the sand but to lift our heads up. To begin to get informed. To begin to get passionate. And to begin to pick up the cry"

Rachel Hickson, Hearctry for Change.

We bring the toughest of truths out into the light.

**BRAVE**

## PRESS RED

### THE GRID



Enabling church leaders to consider and discover their own preconceptions and biases about gender-based violence, looking at how these are informing their churches and ministry, and challenging them to make positive changes.

## PRESS RED

### CONFERENCES



Bringing world-experts and organisations to locations across the UK to educate, equip and empower.

## COMPASSIONATE

We are non-judgmental and determined to ensure that every individual affected by these issues feels valued.



# PRESS RED

## SCHOOLS & PRISONS



Encouraging pupils and inmates to better understand gender-based violence, its impact and the different ways they can choose to respond.



# PRESS RED

## DRAMA



Using hard-hitting drama to uncover the reality of abuse.

We are founded on Christian roots and put Biblical principles at the heart of everything we do.

**ETHICAL**





# PRESS RED

## STUDY RESOURCES



Producing top-quality, accessible  
study opportunities for individuals  
and small groups.

---

And many other  
initiatives including  
speaking, music and workshops

### STRATEGIC

We maximise the impact of donations through targeting  
the decision-makers who have the greatest influence.



## HOW CAN YOU HELP?

If we are to make a real difference, we need you. Visit our website to give directly, complete the enclosed giving form, or get in touch with us to find out about running a fundraising event, volunteering, or the other ways in which you can get involved with Press Red.



We will never stop developing new ways of shining a light on gender violence and helping people to make a difference.

**CURIOUS**

"Violence against women is at the heart of injustice around the world and at work in every local community. It is time to stop it. Never has the opportunity been more pressing than now. It is time. I believe Press Red will help awaken the church to offer transformational hope and change and pray that every believer will hear and answer the call with deliberate action to set people free."

Danielle Strickland,  
Speaker, Author & Social Justice Advocate.



**PRESS RED**

Turn the silence off



f t i For more information please visit  
[www.pressred.org](http://www.pressred.org) or email [info@pressred.org](mailto:info@pressred.org)